



Cherwell District Council

Materiality Assessment & Gap Analysis

Version 1

21 August 2023



Contents

0 Executive Summary	3	3 Recommended actions & cost analysis	
1 Introduction		3.1 Table of recommended actions & cost analysis	28-30
1.1 Cherwell District Council Climate Emergency Strategy	5	4 Appendix	
1.2 Purpose of this report	6	4.1 Full list of actions: CDC estate and operations	32-33
1.3 Overview & process of this report	7	4.2 Full list of actions: Climate Change Adaptation	34-35
2 Materiality Assessment & Gap Analyses		4.3 Full list of actions: Housing	36
2.1 Introduction & Methodology	9-10	4.4 Full list of actions: Industry and commerce	37
2.2 CDC estate and operations	11-12	4.5 Full list of actions: Land and nature	38-40
2.3 Climate change adaptation	13-14	4.6 Full list of actions: Strategic energy generation	41
2.4 Housing	15-16	4.7 Full list of actions: Transport	42-43
2.5 Industry and commerce	17-18	4.8 Full list of actions: Waste and construction	44
2.6 Land and nature	19-20	4.9 Full list of additional actions provided by Bioregional	45-46
2.7 Strategic energy generation	21-22		
2.8 Transport	23-24		
2.9 Waste and construction	25-26		

Cherwell District Council Climate Emergency Context

In 2019 Cherwell District Council (CDC or ‘the Council’ hereafter) declared a climate emergency and pledged to become net zero carbon, both in terms of the Council’s own operations and activities, and in terms of district-wide emissions. Subsequently, in 2020 the Council published its [Climate Action Framework: Transforming Cherwell](#) and a [Carbon Management Plan 2022-25](#) which set out the Council’s approach to achieving these pledges.

About this report

In order to help Cherwell District Council achieve its pledges and enact its Climate Action Framework, Bioregional has been commissioned to recommend a priority list of appropriate and impactful climate actions on which the Council could usefully focus within a 12-month period.

This priority list of recommended actions was derived from a long list of planned and aspirational climate actions through a two-step assessment process:

- **Materiality Assessments** – these identified which of the actions would have the highest carbon reduction or biodiversity impact, and that CDC would most be capable of influencing. The ‘materiality’ of these actions was assessed based on the scale and urgency of the UK and the District’s climate change and biodiversity needs, and the scope of influence that CDC may be able to exert, with the highest scoring actions being deemed of the ‘highest materiality’.

- **Gap Analyses** – these identified where there were planned or aspirational actions missing, and provided actions to fill these ‘gaps’ in policy.

Summary of findings

The actions that were found to have the ‘highest materiality’ in each of the themes were then shortlisted, assigned with rough cost estimates and then transferred into a table of recommended climate actions for inclusion in CDC’s 12-month action plan (see Appendix 4).

Contents of this report

The remainder of this report is structured as follows:

1. Section 1 outlines the context of CDC’s climate emergency strategy and the purpose of the report.
2. Section 2 outlines the methodology of the Materiality Assessments and Gap Analyses, and the results of these exercises for each of the 8 themes. It also highlights the actions of ‘highest materiality’ that are recommended for the CDC to take forward.
3. Section 3 consists of a table summarising all of the ‘highest materiality’ actions that are recommended for CDC to take forward, along with the results of a basic cost analysis to determine the indicative cost of implementing each action.
4. Section 4 is an appendix containing the full long list of actions for each theme.

1. Introduction

Introduction – 1.1 Cherwell District Council Climate Emergency Strategy

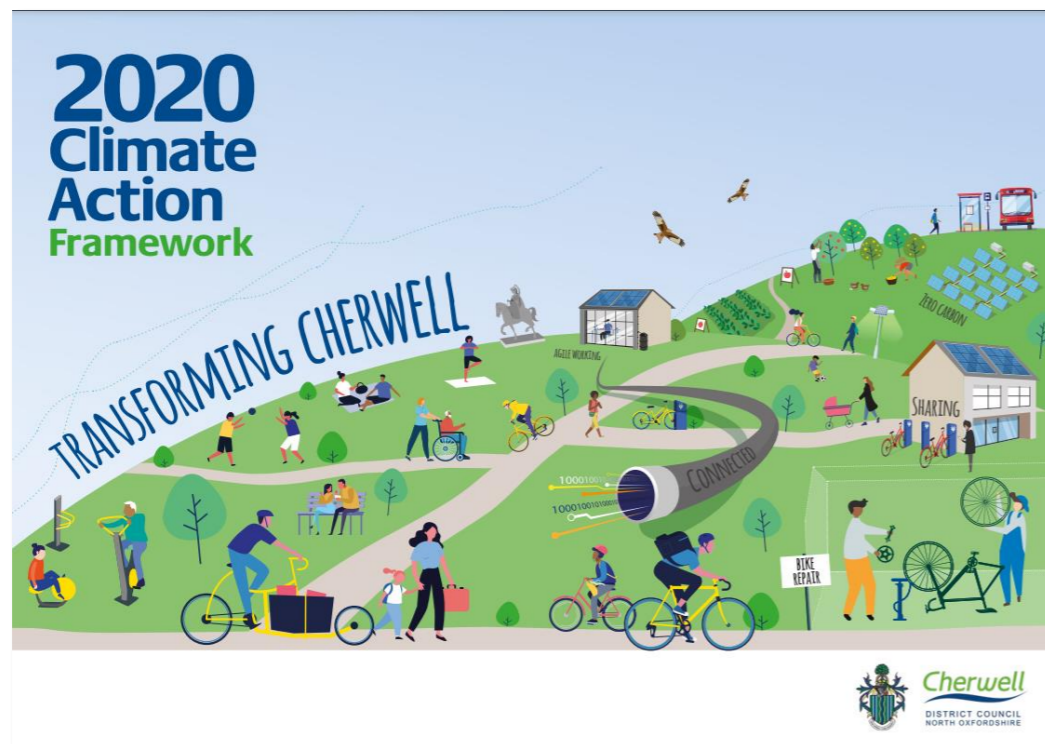
In 2019 Cherwell District Council declared a climate emergency and pledged to:

1. Ensure its own operations and activities are net zero by 2030
2. Do its part to achieve a net zero carbon district by 2030 and lead through example.

Subsequently, in 2020 the Council published its [Climate Action Framework: Transforming Cherwell](#) which set out the Council’s high-level approach to achieving these pledges. The table to the right shows the five key themes contained within CDC’s [Climate Action Framework](#), with specific objectives that CDC has identified for each theme.

Alongside this, CDC also published a [Carbon Management Plan 2022-25](#) which sets out their approach to reducing the emissions from their own estate and operations, including from their buildings, leisure centres, fleet, and staff business travel in their own vehicles.

Both of these documents provided the council and district-level context for assessing the list of planned and aspirational climate actions detailed in this report. For example, the carbon footprints for the Council and the District contained in this report were used to assess how strongly each action linked to a sector responsible for a major part of the Council’s or District’s carbon emissions. CDC’s states objectives on biodiversity were also used to assess how strongly actions linked to the District’s biodiversity needs.



Theme	Objectives
Transport, connectivity and planning 	Prioritise digital infrastructure and co-working facilities over road building
	Increase levels of walking and cycling
	Increase levels of EV, shared and autonomous travel
	Promote net zero carbon new developments
	Continue to spearhead development of eco-town
Natural Carbon Management 	Take advantage of natural capital to capture and store carbon
	Protect, conserve and enhance carbon capture and storage through natural environments
Infrastructure business and systems 	Support Oxfordshire’s ambition to double tree cover
	Smart, flexible, local renewable generation
	Design favouring zero carbon connectivity and low impact living
	EV charging infrastructure for all residents
	Community ownership of energy generation and storage assets
Waste and consumption 	Low carbon business and supply chains
	Maximise waste reduction and recycling
	Zero per person growth in waste and circular economy
Buildings and housing 	Assess whole system carbon impacts in waste strategy planning and influence national policy
	Extensive retrofitting of existing buildings
	Tackle fuel poverty through improvements in building standards and Oxfordshire Affordable Warmth network

Introduction – 1.2 Purpose of this report

Purpose of this report: To help Cherwell District Council identify the most impactful climate actions that can be implemented over a 12-month period

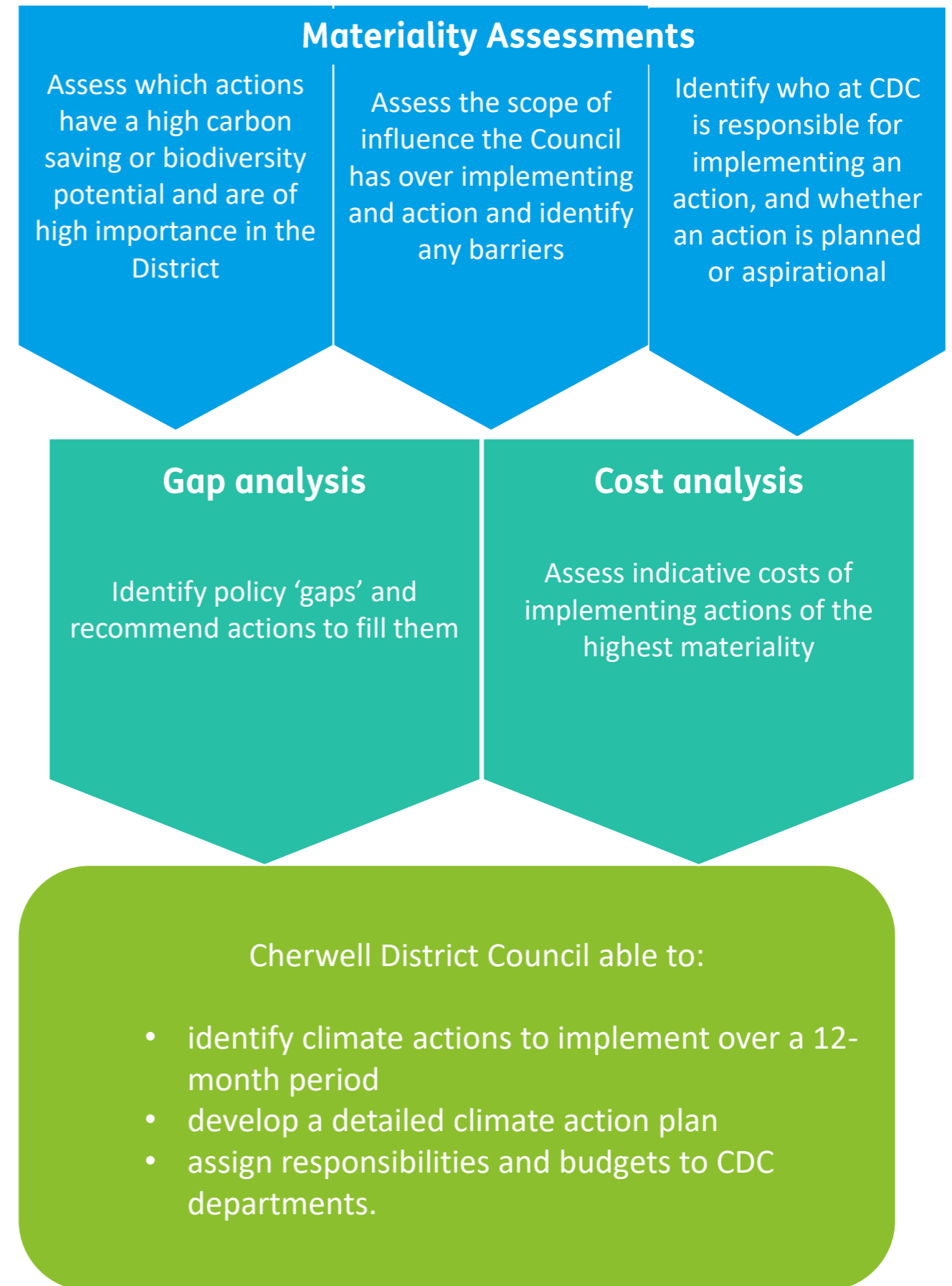
The findings of this report are intended to assist the Council in prioritising actions that could be most impactful in terms of their potential to reduce carbon emissions or improve biodiversity in the district, and that the Council are best-placed to act upon. It is intended that these actions will therefore go some of the way to helping the Council to achieve its climate ambitions.

This report aims to help the Council gain a better high-level understanding of:

- **Actions that will have the highest carbon saving or biodiversity impact** for Cherwell. An action was deemed to have a high carbon saving impact depending on how much the related sector contributes to the district’s carbon emissions (identified using emissions data pulled from the 2020 Climate Action Framework), and the scale or urgency with which the Climate Change Committee deems the action will need to be implemented. An action was deemed to have a high biodiversity impact where it could lead to a significant increase in biodiversity natural capital.
- **Actions that the Council can exert the most influence over.** Actions which the Council can exert direct influence over (such as those that are under direct control or ownership of the Council), were deemed to be easier to implement due to the 12-month timeframe for the implementation of actions. Actions that rely on public or partner cooperation were deemed to be more difficult to implement, due to the reliance on external factors to implement the actions.
- **Themes where existing actions are missing.** This report identifies themes where fewer climate actions of the highest impact and influence exist and then provides recommended actions to fill these ‘gaps’.
- **Who at Cherwell District Council is responsible for an action.** The actions in the Materiality Assessments are colour coded, allowing the Council to identify if an action is led by the Climate Change department, any other department at the Council or if the action is aspirational. See key in the Materiality Assessments in section 2.

It is hoped that the understanding offered by this report will help Cherwell District Council to identify:

- **Priority actions** that can be implemented efficiently over a 12-month period and that will have high carbon saving impacts.
- **Very indicative costs** of implementing recommended actions.



Overview and process of this report

This report recommends a list of appropriate and impactful climate actions that CDC could prioritise within a 12-month action plan.

This list was condensed down from a longer list of all of the climate actions that the Council is either planning or aspires to carry out. This long list of actions (listed in full in Appendix 4) contains actions provided by the Climate Action Lead at CDC, Jo Miskin, as well as actions proposed by Bioregional through the Gap Analyses exercises reviewing the CDC Carbon Management Plan 2022-25 and 2020 Climate Action Framework.

Materiality Assessments & Gap Analyses overview

In total, 107 climate actions were identified in the long list. These were first divided up into 8 'themes' to enable a more comprehensive and holistic materiality analysis:

1. CDC Estate and operations
2. Climate change adaptation
3. Housing
4. Industry and commerce
5. Land and nature
6. Strategic energy generation
7. Transport
8. Waste and construction.

A **Materiality Assessment** was then conducted for each of the 8 themes to identify which climate actions might be considered priorities on which CDC could usefully focus, so that it may maximise its effectiveness and avoid spreading its limited resources too thinly. Each assessment scored the actions for 'importance' and 'influence' on a scale of 0-5, with 0 indicating of low or no importance or influence, and 5 indicating of the highest importance or influence. A topic is considered 'more material' the higher it scores on these scales. See section 2 for more detail on the scoring criteria and how the outcomes should be interpreted.

Please note that this exercise is not intended to dictate or delimit the Council's activities, but only to guide them by enabling better-informed decisions.

Two **Gap Analyses** were also undertaken as part of this report:

1. A list of planned and aspirational climate actions was provided to Bioregional by CDC's Climate Action Lead. These formed that basis of the long list of climate actions. Bioregional then undertook a review of all the Council's climate actions and targets. These actions were then compared to the actions provided by the Council's Climate Action Lead. Any actions identified during the review that were not present in the actions list provided by CDC were then added to the long list of actions.
2. Once the Materiality Assessments had been carried out on the long list of actions, another Gap Analysis was undertaken to identify topic areas where there were missing actions of 'high materiality'. Bioregional then recommended appropriate 'high materiality' actions that the Council could take to fill in these policy 'gaps'. These recommendations were pulled from a variety of sources including previous work carried out by Bioregional for CDC and other Local Authorities. The actions recommended were assessed for their materiality in the same way as actions provided by Cherwell District Council. Bioregional's recommended actions are shown in the Materiality Assessments in orange as **Aspirational Activities**.

Finally, Bioregional carried out a basic **Cost Analysis** for all of the recommended actions (see section 4 Appendix). It should be noted that these costs have not been rigorously modelled, but are indicative and based on Bioregional's background knowledge and professional expertise. The costs levels are indicated with '£' sign based on the following scale:

- £ = Low cost
- ££ = Medium cost
- £££ = High cost
- ££££ = Significant cost

2. Materiality Assessments & Gap Analyses

Materiality Assessments & Gap Analyses – 2.1 Introduction & methodology

The following pages in this section contain the **Materiality Assessments** and **Gap Analyses** for each of the 8 themes identified:

1. CDC estate and operations
2. Climate change adaptation
3. Housing
4. Industry and commerce
5. Land and nature
6. Strategic energy generation
7. Transport
8. Waste and construction

The Materiality Assessments are shown in a ‘Boston box’ matrix format, with actions of high influence and high impact – that is, those that scored 2.5 or over in terms of important or influence – shown in the top right-hand corner of the box.

The Materiality Assessments shown in this section use a short form action title to allow all actions to fit comfortably within the table. Provided in the Appendix (section 4) is a list of the actions in their full long form, along with their influence and impact scores. The methodology and assumptions for the scoring are provided below.

The **Materiality Assessments** aim to identify:

- Which actions could have the **greatest carbon saving or biodiversity impact** and,
- Which actions Cherwell District Council are most **able to influence**.

The aim is to help Cherwell District Council make decisions about how to prioritise climate actions. These actions were then scored against a range of **criteria** regarding their relative impact and influence, so that they could be plotted onto a matrix.

The **criteria on which each topic’s importance/urgency** for climate transition and biodiversity recovery was assessed were:

- **Speed and scale of change required on this topic** for the UK’s legislated carbon reduction budgets, climate adaptation, or biodiversity recovery (Carbon reduction or climate adaptation sources: *Committee on Climate Change Sixth Carbon Budget Progress in reducing emissions 2023 Report to Parliament*. Biodiversity sources: *JNCC State of Nature report; Nature Positive 2030 report; Nature Recovery for Our Survival; Prosperity and Wellbeing Report; Together for Nature report; DEFRA Environmental Land Management update*).
- **How strongly an action links to Cherwell’s carbon footprint or biodiversity needs**. How strongly does an action link to a sector responsible for a major part of the District’s carbon footprint or biodiversity needs? (Sources: *2020 Climate Action Framework* and *CDC Carbon Management Plan 2022-25*). Where appropriate, the District level carbon footprint data was used, however for actions that relate more directly to Council emissions, the Council’s carbon footprint was used.

The **criteria on which the scope for influence by Cherwell District Council** on each topic were:

- **How much influence does the Council have over this action?** That is, to what extent can CDC implement an action without reliance on internal or external parties, private enterprise or the public.
- **How smooth is the path to implementing action?** Considering potential obstacles such as: regulatory; technological; actor reluctance; geographic.

For each theme, two **Gap Analyses** were conducted, these aimed to identify:

- Any planned or aspirational actions that were uncovered by Bioregional in our review of CDC documents, but that were missing in the original list of actions provided by the CDC Climate Action Lead.
- Themes with fewer or no actions of the ‘highest materiality’ (i.e. fewer actions in the top four squares of the Materiality Assessment matrix) and,
- Recommended actions of the ‘highest materiality’ to fill any identified ‘gaps’, where a theme has no or few actions of the ‘highest materiality’.

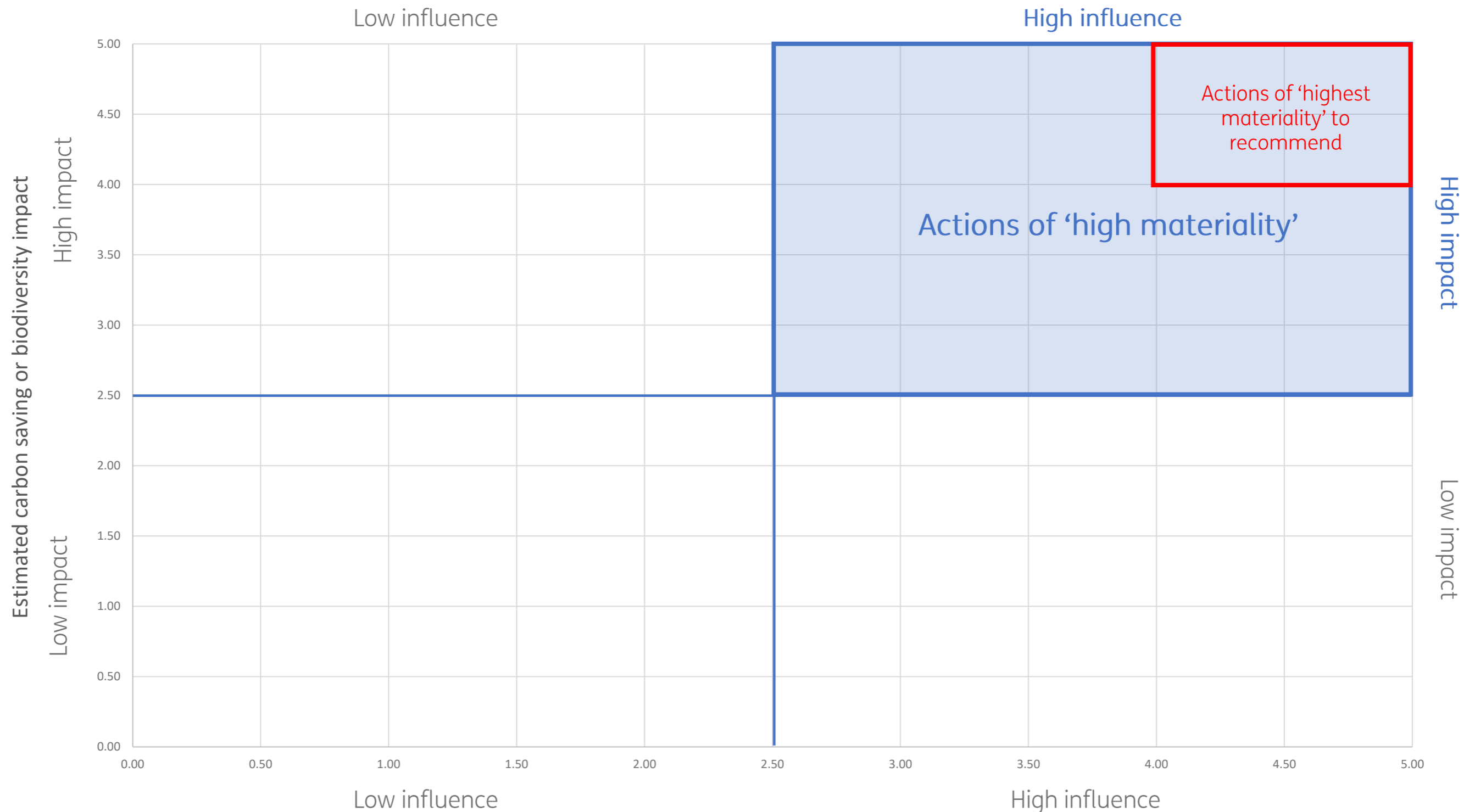


Materiality Assessments & Gap Analyses – 2.1 Introduction & methodology

An example [Materiality Assessment](#) matrix is provided below to demonstrate the methodology.

Actions that fell within the top right-hand corner of the matrix were deemed to be of ‘[high materiality](#)’, meaning they are actions that will have a high carbon reduction or biodiversity impact, and on which the Council will be able to exert a high level of influence.

Actions that fell within the top four squares of the matrix (highlighted in red) were deemed to be of the ‘[highest materiality](#)’ and thus recommend the Council take forward to their 12-month climate action plan.



2.2 CDC estate and operations – overview & recommended actions

Theme overview

This theme contains all the actions that relate directly to Cherwell District Council activities or properties that are owned by the Council. This includes actions to retrofit buildings, influence staff decisions and produce Council-led evidence bases, reports and planning documents.

This theme contains 28 actions in total, of which:

- 17 are aspirational activities,
- 3 are planned activities being led by the CDC Climate Change department, and
- 8 are planned activities being led by other CDC departments.

Of these actions **the vast majority** were deemed to be of **'high materiality'**. This means that most actions under this theme could have a high carbon saving impact, either in terms the Council's direct emissions or on the District's overall emissions, and that the Council can exert a high level of influence over their implementation.

Many of the actions in this theme can be solely completed by the Council and will require little to no input from external parties or cooperation from the public or private enterprise. As shown in the Materiality Assessment overleaf, all 28 of the actions within this theme scored 3.5 or over on influence, meaning the Council can exert a high level of control over the implementation of actions. No actions were deemed to be of low impact.

Gap Analysis

This theme had a total of **7 actions** that were deemed to be of **'highest materiality'** to recommend as priority actions. No additional actions have been provided.

Recommended actions

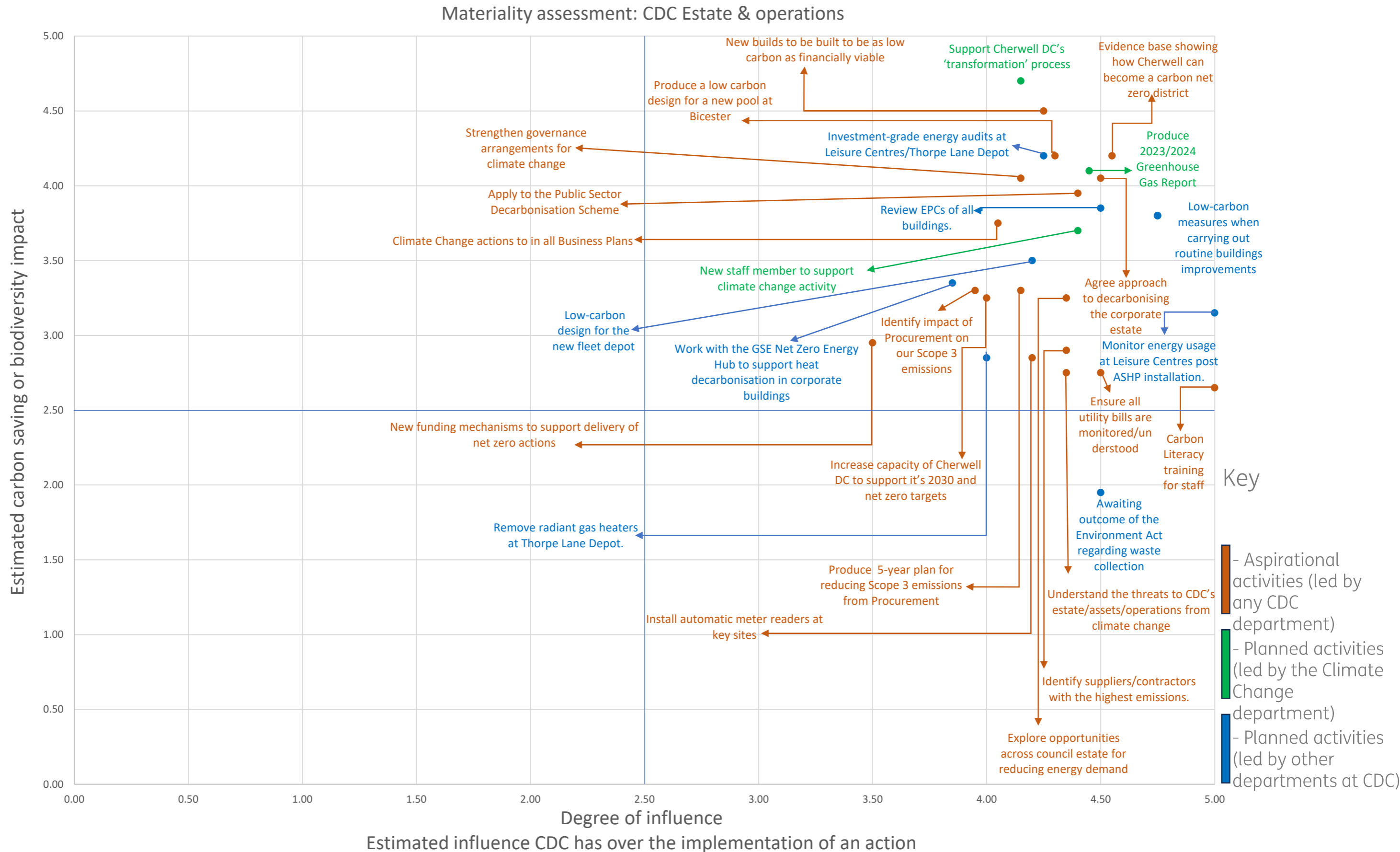
As per the methodology, the actions within the top four squares of the Materiality Assessment are recommended as priority actions. *Please note the actions listed below are in their long form, whereas in the Materiality Assessment matrix overleaf they are shown in their short form . Please refer to Appendix 4 for a full list of all actions in their long and short forms.*

The actions recommended from this theme in order of highest materiality are:

Support

1. Support Cherwell DC's 'transformation' process, in identifying climate actions for Service Areas
2. Any new buildings, eg leisure centres, to be built to be as low carbon as financially viable.
3. Produce a robust evidence base showing how Cherwell can become a carbon net zero district.
4. Leisure Services to produce a low carbon design for a new pool at Bicester Leisure Centre.
5. Produce the 2023/2024 Greenhouse Gas Report.
6. Continue to include low-carbon measures when carrying out routine buildings improvements.
7. Agree approach to decarbonising the corporate estate, including a phased plan.

2.2 CDC estate and operations – Materiality Assessment



2.3 Climate change adaptation – overview & recommended actions

Theme overview

This theme contains all the actions that relate to climate adaptation, mitigation or reaching net-zero. These actions include the creation of a net-zero road map and introducing climate-related policy, partnerships with local businesses and NGOs to enhance climate action or provide best practice case studies, and advice and internal monitoring on the progress of climate change adaptation.

This theme contains 20 actions, of which:

- 6 are aspirational activities,
- 9 are planned activities being led by the CDC Climate Change department,
- 5 are planned activities being led by other CDC departments.

All actions within this theme scored highly in terms of influence. As a result, all actions within this theme have a clear and smooth path to implementation with only a few actions requiring partner or public cooperation.

These actions were split between those with high impact (9 actions) and those with low impact (11 actions). Although these 9 actions are considered to be of 'high materiality', only 3 actions have a high enough score to be recommended as priority actions.

Gap Analysis

Given that there were already 3 actions of 'highest materiality' in this theme, it is considered to have no gaps, and as such no additional actions have been recommended.

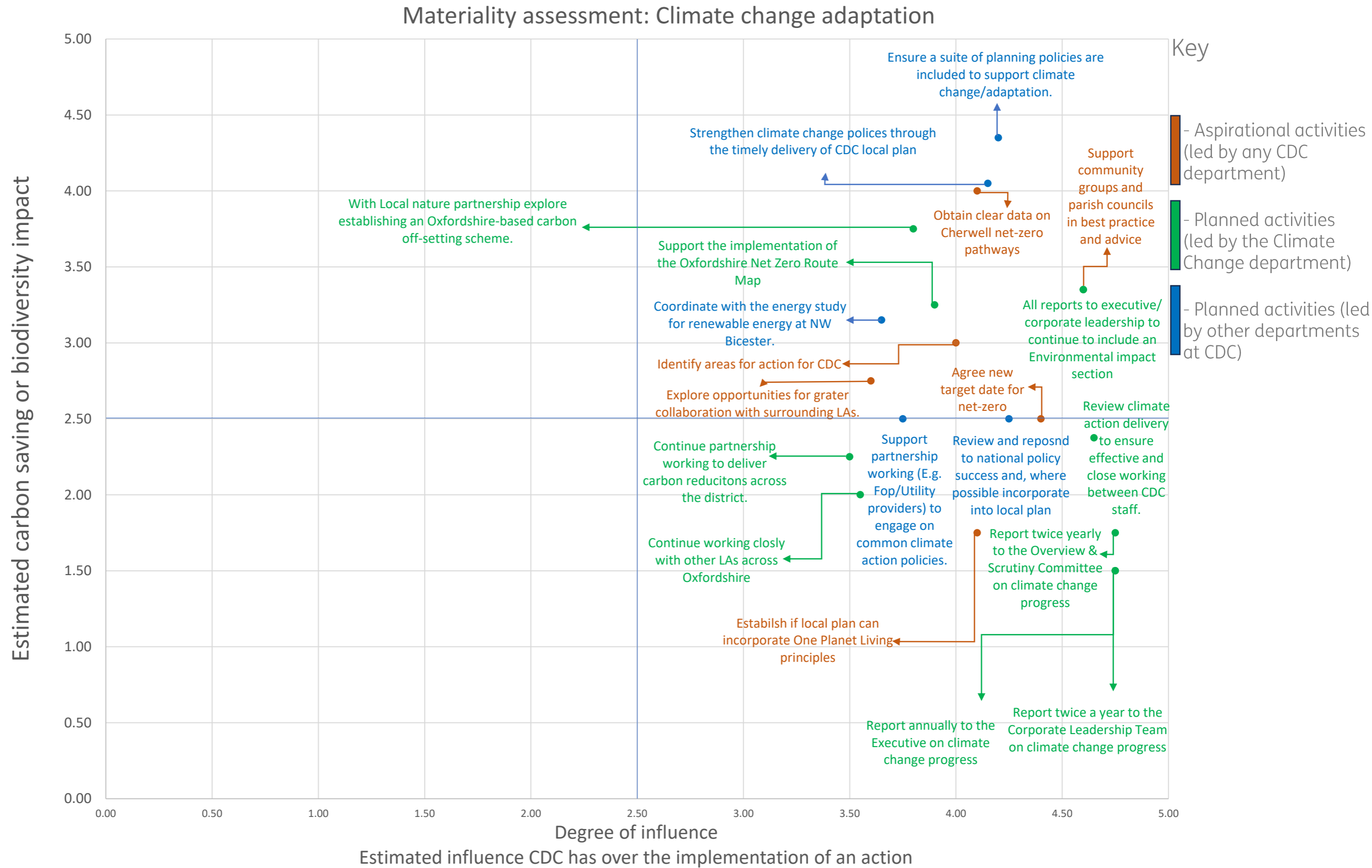
Recommended actions

As per the methodology, the actions within the top four squares of the Materiality Assessment are recommended as priority actions. *Please refer to Appendix 4 for a full list of all actions in their long and short forms.*

The actions recommended from this theme in order of highest materiality are:

1. Ensure a suite of other planning policies are included to support climate change mitigation and adaptation. For example:
 - Net zero development
 - Biodiversity Net Gain
 - Green Infrastructure
 - Low carbon and active travel.
 - Decentralised and renewable energy systems
2. Ensure the timely production of a deliverable CDC Local Plan, to strengthen our policies to respond to climate change
3. Obtain clear data on possible net zero pathways for the Cherwell District

2.3 Climate change adaptation – Materiality Assessment



2.4 Housing – overview & recommended actions

Theme overview

This theme contains all the actions that relate directly to housing, both CDC-owned and private stock. Actions within this theme cover topics such as retrofit expansion, supporting CDC staff and a heat network feasibility assessment.

This theme contains 10 actions, of which:

- 4 are aspirational activities,
- 4 are planned activities being led by the CDC Climate Change department,
- 1 is a planned activity being led by other CDC departments, and
- 1 is an additional activity that has been recommended by Bioregional.

Of the 10 actions, **8 actions** were considered to be of ‘**high materiality**’. All of actions were considered to be of high impact, given that they address emissions from housing, which is an important contributing sector to the District’s carbon footprint.

Gap Analysis

This theme had a total of **3 actions** that were deemed to be of ‘**highest materiality**’. These actions cover the topics of energy efficiency, retrofit and energy networks.

Bioregional has identified a policy gap regarding new build developments and has therefore recommended **1 additional action** of ‘highest materiality’ which addresses this topic. Cherwell District Council has a target to build 1,140 new homes per year until 2031 (CDC Housing Strategy 2019-2024). It is therefore important that new housing is built with the leading sustainability standards in mind, in order to reduce the carbon emissions associated with housing within the District. CDC can exert a high level of influence on this through effective planning policy, as well as through embedding sustainable practices within the delivery of their own housing stock.

Recommended actions

As per the methodology set out in section 2.1, the actions within the top four squares of the Materiality Assessment are recommended as priority actions. *Please refer to Appendix 4 for a full list of all actions in their long and short forms.*

The actions recommended from this theme in order of highest materiality are:

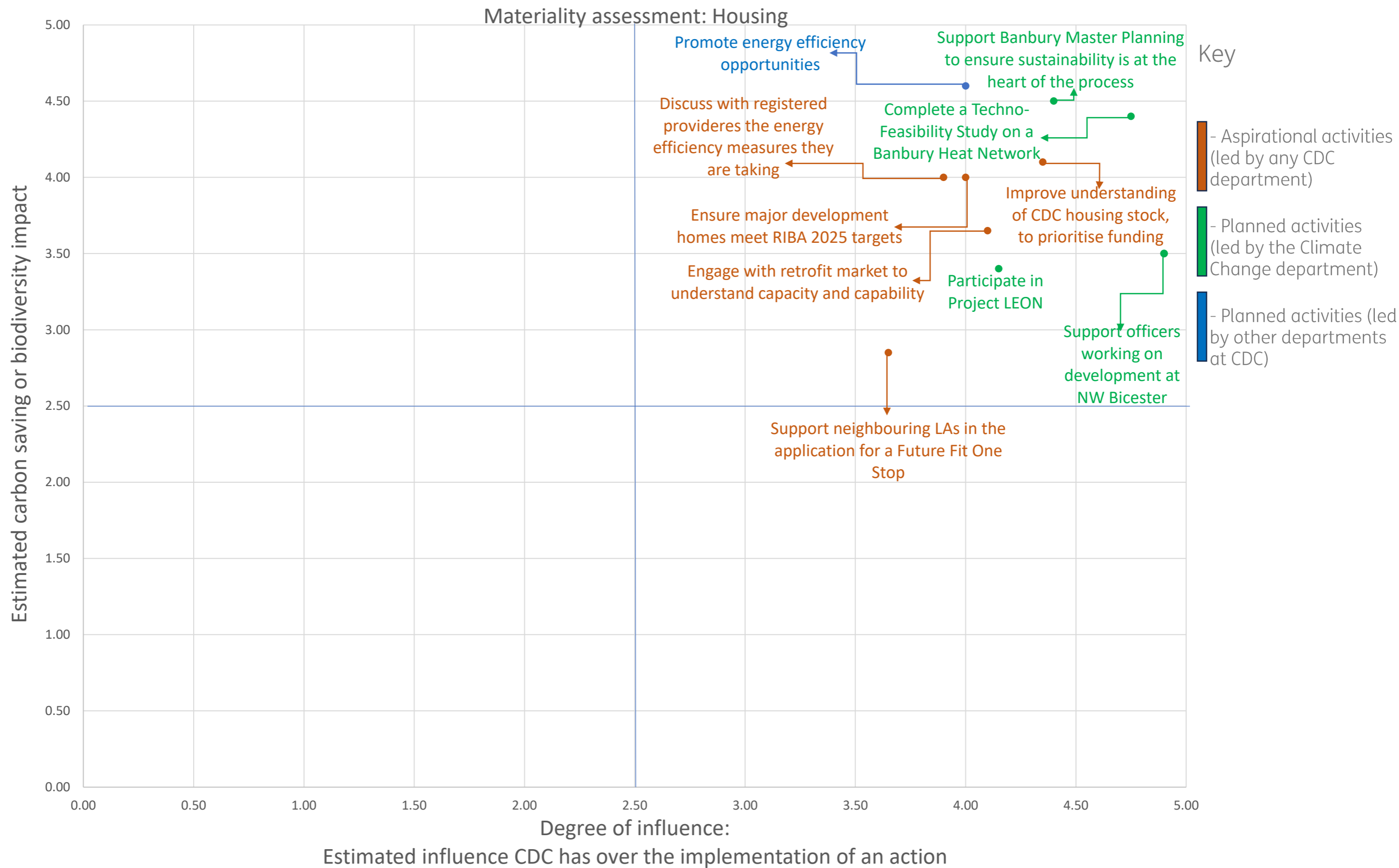
Support Banbury Master Planning to ensure sustainability is at the heart of the process.

1. Promote energy efficiency opportunities, e.g. HUG/Heat Pump Ready Scheme/Cosy Homes Oxfordshire/LEAP/ECO4.
2. Complete a Techno-Feasibility Study on a Banbury Heat Network.
3. Improve our understanding of the district’s housing stock so that we can prioritise funding

The additional action of ‘highest materiality’ recommended by Bioregional is:

1. Through planning policy, ensure all houses in major new build developments are designed to at least meet the 2025 targets of the RIBA 2030 Climate Challenge:
 - For domestic/residential: Operational energy target of <60 kWh/m²/y; Embodied carbon target of <800 kgCO₂e/m²; Potable water use of <95 litres/person/day
 - For non-domestic (new build schools): Operational energy target of <70 kWh/m²/y; Embodied carbon target of <675 kgCO₂e/m²; Potable water use of <1.5 m³/pupil/y
 - For non-domestic (new build offices): Operational energy target of <75 kWh/m²/y, DEC B (50) and/or NABERS Base build 5; Embodied carbon target of <970 kgCO₂e/m²; Potable water use of <13 litres/person/day

2.4 Housing– Materiality Assessment



2.5 Industry and commerce – overview & recommended actions

Theme overview

This theme contains actions relating to private businesses and job opportunities within the District. The actions cover topics such as the role of business in influencing, job creation, and in business engagements and forums.

This theme contains 7 actions, of which:

- 2 are aspirational activities,
- None are being led by the CDC Climate Change department,
- 4 are being led by other CDC departments, and
- 1 is an additional activity that has been recommended by Bioregional.

5 actions within this theme scored highly in terms of influence and importance and were therefore considered to be of 'high materiality'. 1 action was considered to be low impact in terms of carbon saving, but which the Council could exert a high amount of influence over.

Gap Analysis

This theme had 1 action that was deemed to be of 'highest materiality' to be recommended for implementation. Bioregional therefore recommended 1 additional action of 'highest materiality' that could be taken forward. This action addresses the sector which accounts for the highest carbon emissions from industry in Cherwell: gas and other fuel burning.

Recommended actions

As per the methodology, the actions within the top four squares of the Materiality Assessment are recommended as priority actions. *Please refer to Appendix 4 for a full list of all actions in their long and short forms.*

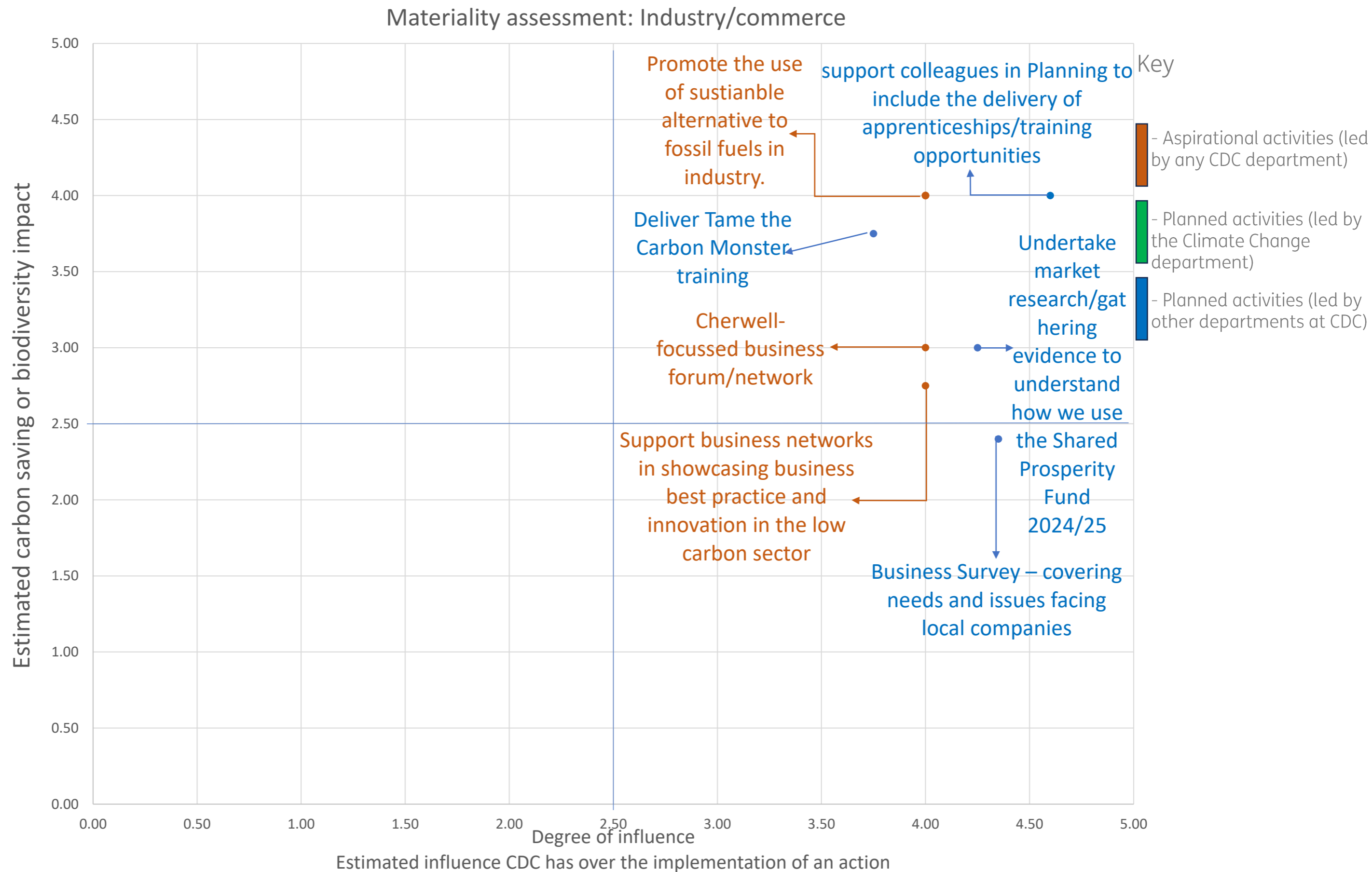
The one 'highest materiality' action recommended from this theme is:

1. Green Construction Skills – support colleagues in Planning to include the delivery of apprenticeships/training opportunities through planning conditions.

The additional 'highest materiality' action recommended by Bioregional is:

1. Support industry decarbonisation by promoting the switch from burning gas and other fuels to burning sustainable alternatives such as green hydrogen through new Local Plan policies.

2.5 Industry and commerce – Materiality Assessment



2.6 Land and nature – overview & recommended actions

Theme overview

This theme contains all the actions that relate to public and privately owned land, biodiversity and nature. Actions include the management and enhancement of Cherwell's parks, biodiversity net gain targets, enhancing and designating carbon offset sites, and policy support.

This theme contains 20 actions, of which:

- 10 are aspirational activities,
- 1 is a planned activity being led by the CDC Climate Change department,
- 7 are planned activities being led by other CDC departments, and
- 2 are additional activities that have been recommended by Bioregional

Of the 20 actions, **11 actions** were considered to be of 'high materiality'.

Where actions relate to biodiversity, their score for impact has been determined by the action's ability to increase biodiversity within Cherwell.

All actions were deemed to be of high influence, suggesting CDC has a smooth route to implement any actions within the Land and nature theme.

Gap Analysis

This theme had a **1 action** that was deemed to be of 'highest materiality' to be recommended for implementation.

As such, Bioregional recommended **2 additional 'highest materiality' actions** that could be taken forward by Cherwell District Council. These relate primarily to the creation, restoration or conservation of natural habitats such as forests and peatlands that have multiple benefits including carbon sequestration and storage, and biodiversity enhancement. Additionally, using natural capital assets as a strategy for carbon management is one of CDC's key strategic focus areas within their Climate Action Framework, meaning these actions will help CDC to achieve their climate objectives.

Recommended actions

As per the methodology, the actions within the top four squares of the Materiality Assessment are recommended as priority actions. *Please refer to Appendix 4 for a full list of all actions in their long and short forms.*

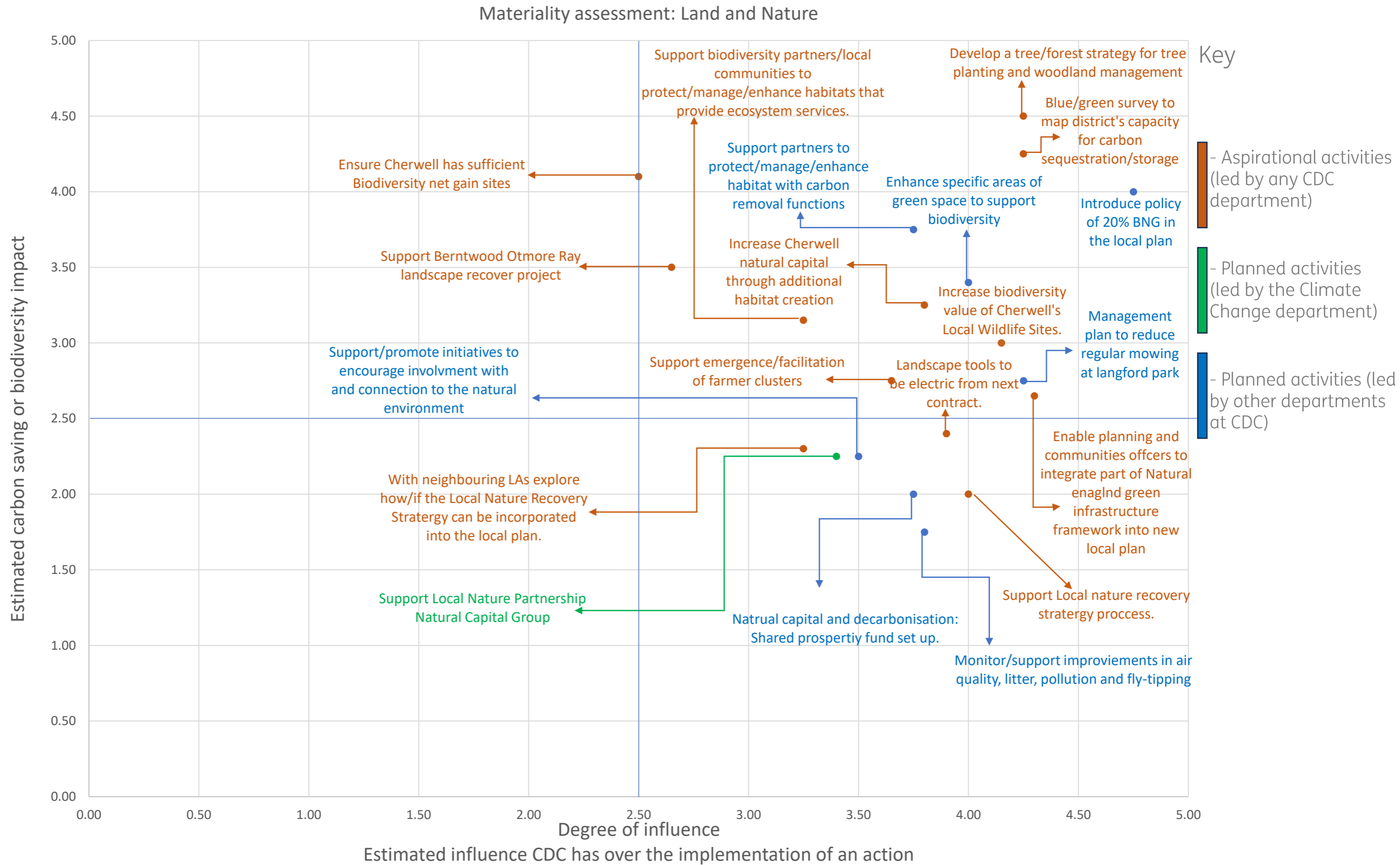
The one 'highest materiality' action recommended from this theme is:

1. Support the emerging Local Plan to introduce a policy of 20% Biodiversity Net Gain, which would double funds available for nature recovery

Additional actions recommended by Bioregional in order of highest materiality are:

1. Develop a comprehensive tree/forest strategy in order to increase tree planting rates within the district and ensure long-term maintenance/stewardship of forests/woodlands (eg could include plan to grow low maintenance trees on road verges and in forest gardens; volunteer programmes for tree planting; opportunities for carbon offsetting schemes)
2. Commission a blue/green infrastructure survey of the district to map existing and potential natural capacity for carbon sequestration and storage. Use this to inform local planning policies, support spatial growth strategies and compensation/mitigation strategies to offset any GI losses as a result of development.

2.6 Land and nature – Materiality Assessment



2.7 Strategic energy generation – overview & recommended actions

Theme overview

This theme contains all the actions relating to strategic energy generation. The majority of actions in this theme relate to solar photovoltaic expansion, however other topics include assessing energy generation capacity and participating in a Local Area Energy Plan.

This theme contains 7 actions, of which:

- 1 is an aspirational activity,
- 1 is a planned activity being led by the CDC Climate Change department, and
- 5 are planned activities being led by other CDC departments.

Whilst emissions from electricity consumption within Cherwell are low, the expansion of energy generation is considered a priority by the Climate Change Committee, Cherwell Climate Action Framework and the Oxfordshire Energy Strategy. Therefore, all 7 actions related to strategic energy generation were considered to be of 'high materiality'.

Additionally, many of the actions aimed to expand energy generation on CDC-owned property. As a result, the Council can exert a significant amount of influence over these actions.

Gap Analysis

4 actions were considered of 'highest materiality' to be carried forward as recommendations. As such, no additional actions have been recommended by Bioregional.

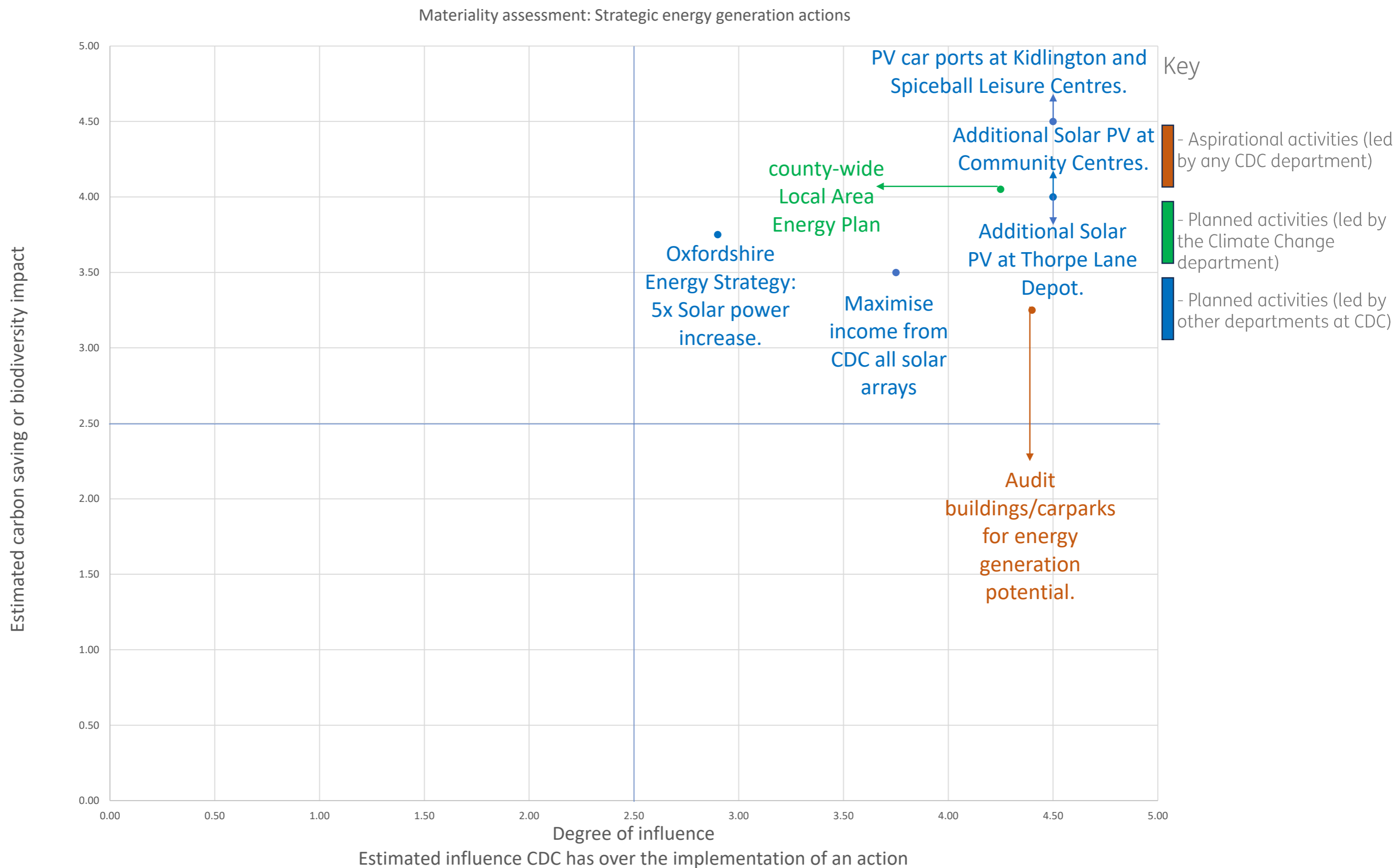
Recommended actions

As per the methodology set out in section 2.1, the actions within the top four squares of the Materiality Assessment are recommended as priority actions. *Please refer to section 4 Appendix for a full list of all actions in their long and short forms.*

The actions recommended from this theme in order of highest materiality are:

1. Install solar PV car ports at Kidlington and Spiceball Leisure Centres.
2. Participate in a county-wide Local Area Energy Plan process.
3. Additional Solar PV at Community Centres.
4. Additional Solar PV at Thorpe Lane Depot.

2.7 Strategic energy generation – Materiality Assessment



2.8 Transport– overview & recommended actions

Theme overview

This theme contains all the actions relating to transportation and transport infrastructure. The majority of actions within this theme are related to the implementation of EV infrastructure or the increase in electric vehicles. However, some actions also cover public and active transportation.

This theme contains 13 actions, of which:

- 6 are aspirational activities,
- 1 is a planned activity being led by the CDC Climate Change department and,
- 6 are planned activities being led by other CDC departments

Transportation is the single largest source of carbon emissions for Cherwell District. As such, 12 of the actions within this theme were considered to be of high impact in terms of carbon reduction. The only action not considered to have a high carbon saving impact was ‘Expand salary sacrifice scheme to include EVs’. This is because the action, which addresses CDC staff and business travel, is responsible for a very low proportion of the Council’s own carbon emissions.

Gap Analysis

Of the 13 actions, **6 actions** were considered to be of ‘highest materiality’ to be carried forward as recommendations. These actions included expanding the Council’s EV fleet, expanding EV infrastructure within the District, developing walking and cycling infrastructure plans, and increasing the provision of public transportation.

These actions aim to reduce vehicular emissions and support public and active transportation. As such no gaps were identified for this theme, and Bioregional has not recommended any additional actions.

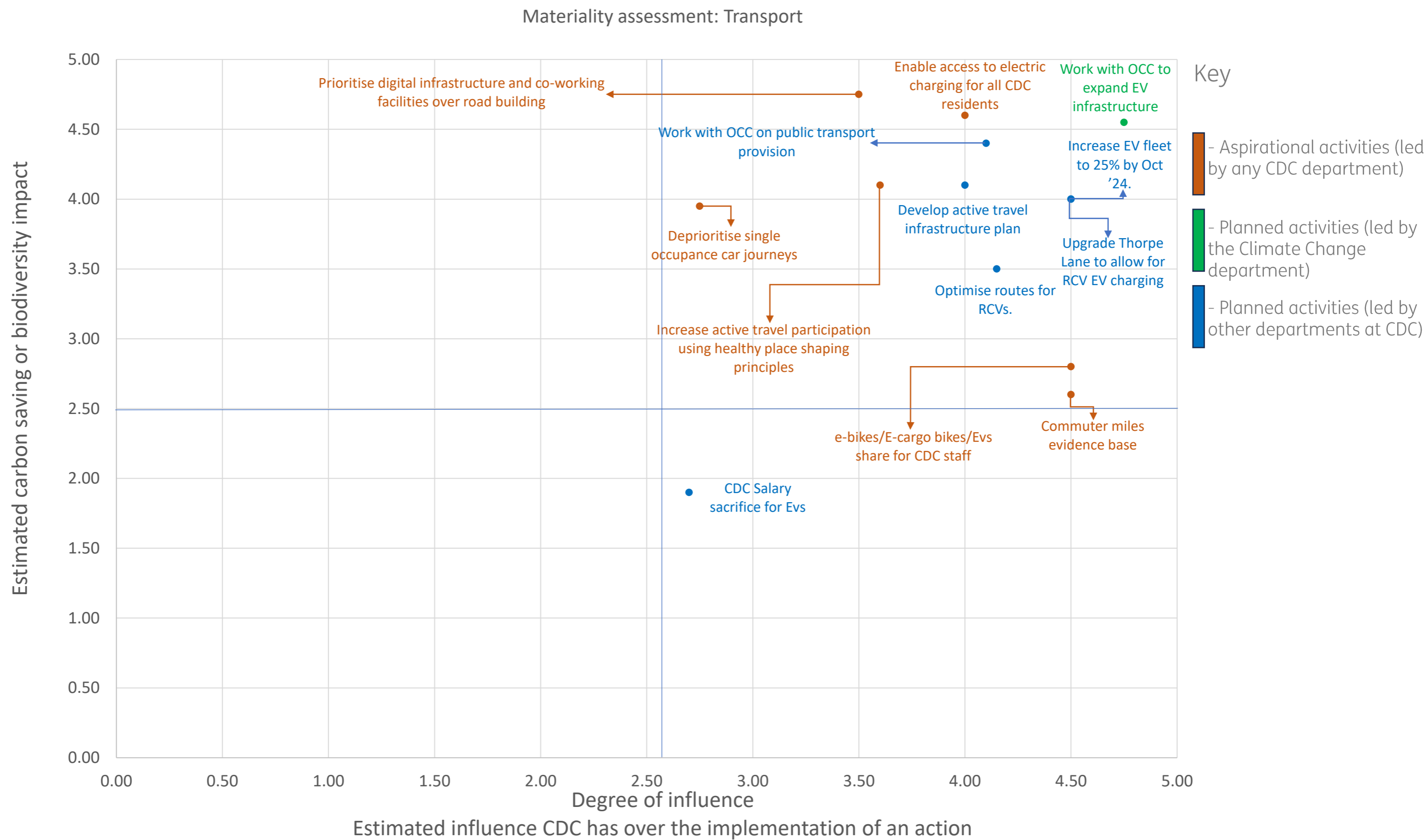
Recommended actions

As per the methodology, the actions within the top four squares of the Materiality Assessment are recommended as priority actions. *Please refer to Appendix 4 for a full list of all actions in their long and short forms.*

The actions recommended from this theme in order of highest materiality are:

1. Enabling electric charging infrastructure accessible for all residents.
2. Work with OCC to implement LEVI funding to expand EV infrastructure in Cherwell
3. Continue to work closely with OCC to support the improvement in the provision of public transport in Cherwell.
4. Support the development of local cycling and walking infrastructure plans.
5. Increase EV fleet to 25% by Oct ’24.
6. Upgrade existing supply to Thorpe Lane Depot to allow charging of EV RCVs.

2.7 Transport- Materiality Assessment



2.8 Waste and construction – overview & recommended actions

Theme overview

This theme contains all the actions relating to a reduction in waste from various sources. Actions within this theme aim to reduce food and construction waste, increase recycling rates in the District and assess the carbon impacts of waste.

This theme contains 7 actions, of which:

- 4 are aspirational activities,
- There are no planned activities being led by the CDC Climate Change department,
- 2 are planned activities being led by other CDC departments, and
- 1 is an additional activity that has been recommended by Bioregional.

Gap Analysis

As waste accounts for a very minor proportion of both the Council's and the District's carbon emissions, and the Council can exert minimal influence over individuals daily habits, **no actions** within this theme were considered to be of **'highest materiality'** to be carried forward as recommendations.

As such a significant policy gap was identified, and **1 action** of **'highest materiality'** was recommended by Bioregional. This action relates to the waste created and resources used by the building and construction industry, which are major sources of embodied carbon. Embodied carbon typically accounts for around a third of the average building's carbon emissions. Industry body RIBA states in their 2030 Climate Challenge that all new developments in operation from 2030 should reduce their embodied carbon by at least 40% from current business as usual baseline figures before offsetting. Using reused or recycled construction materials in new developments not only reduces waste but also reduces the embodied carbon of new buildings. The London Energy Transformation Initiative's

Embodied Carbon Primer has therefore set targets for embodied carbon reduction, including for 30% of total building construction materials and elements to be reused.

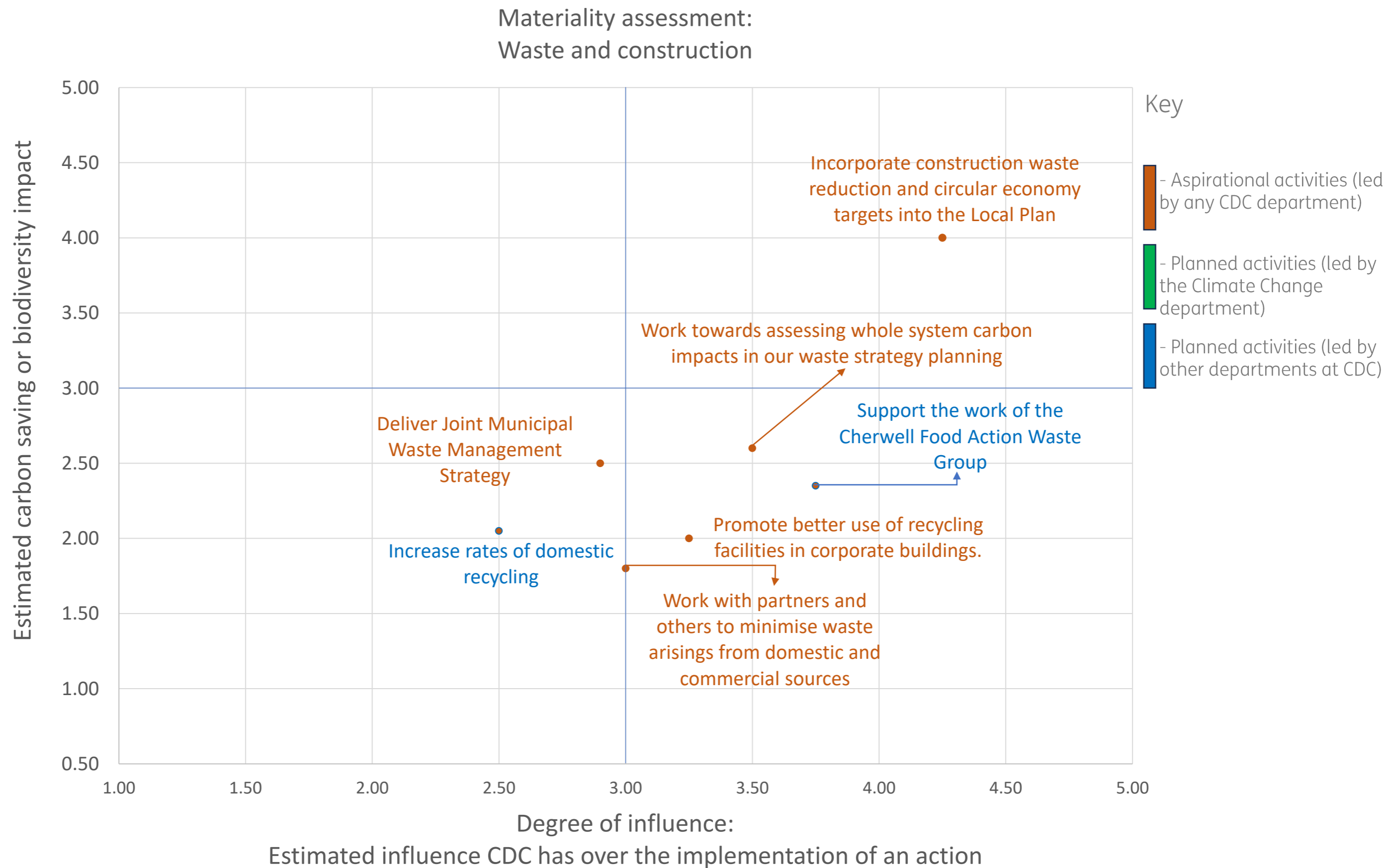
Recommended actions

As per the methodology, the actions within the top four squares of the Materiality Assessment are recommended as priority actions. *Please refer to Appendix 4 for a full list of all actions in their long and short forms.*

The action of 'highest materiality' recommended by Bioregional is:

1. Incorporate into the Local Plan (eg Policy ESD 3: Sustainable Construction) a requirement for developers to target industry standards regarding construction waste reduction, resource efficiency and circular economy principles, eg LETI 2030 target for 30% total building construction materials & elements that are reused.

2.7 Waste and Construction – Materiality Assessment



3. Recommended actions & cost analysis

3 Table of recommended actions & cost analysis

List of all recommended actions

The table below lists all of the climate actions that have been identified as ‘high materiality’ and are thus recommended for inclusion in CDC’s 12-month climate action plan. They are ordered based on their materiality scores in descending order, starting with the highest at the top.

Cost Analysis

A basic cost analysis has been completed for each the recommended actions. The results of this analysis are displayed in the table below with ‘£’ indicating a low cost of implementing an action, ranging to ‘££££’ indicating a significant cost of implementation.

Action number	Theme	Action	Indicative cost (£-££££)
1	Transport	Work with OCC to implement LEVI funding to expand EV infrastructure in Cherwell	££
2	Housing	Ensure the successful competition of the Techno-Feasibility Study for proposed Banbury Heat Network.	£
3	Strategic energy generation	Install solar PV car ports at Kidlington and Spiceball Leisure Centres.	£££
4	Housing	Support Banbury Master Planning to ensure sustainability is at the heart of the process.	£
5	CDC Estate and operations	Support Cherwell DC’s ‘transformation’ process, in identifying climate actions for Service Areas.	£
6	Land & Nature	Support the emerging Local Plan to introduce a policy of 20% Biodiversity Net Gain, which would double funds available for nature recovery	£
7	CDC Estate and operations	Produce a robust evidence base showing how Cherwell can become a carbon net zero district.	££
8	Land & Nature	Develop a comprehensive tree/forest strategy in order to increase tree planting rates within the district and ensure long-term maintenance/stewardship of forests/woodlands (eg could include plan to grow low maintenance trees on road verges and in forest gardens; volunteer programmes for tree planting; opportunities for carbon offsetting schemes)	££
9	CDC Estate and operations	Any new buildings, eg leisure centres, to be built to be as low carbon as financially viable.	££

3 Table of recommended actions & cost analysis

Action number	Theme	Action	Indicative cost (£-££££)
10	Housing	Promote energy efficiency opportunities, eg HUG/Heat Pump Ready Scheme/Cosy Homes Oxfordshire/LEAP/ECO4.	£
11	Industry and commerce	Green Construction Skills – support colleagues in Planning to include the delivery of apprenticeships/training opportunities through planning conditions.	£
12	Climate change adaptation	Ensure a suite of other planning policies are included to support climate change mitigation and adaptation. For example: <ul style="list-style-type: none"> • Net zero development • Biodiversity Net Gain • Green Infrastructure • Low carbon and active travel. • Decentralised and renewable energy systems 	££
13	CDC Estate and operations	Produce the 2023/2024 Greenhouse Gas Report.	££
14	CDC Estate and operations	Agree approach to decarbonising the corporate estate, including a phased plan.	£
15	CDC Estate and operations	Continue to include low-carbon measures when carrying out routine building improvements.	££
16	Land & Nature	Commission a blue/green infrastructure survey of the district to map existing and potential natural capacity for carbon sequestration and storage. Use this to inform local planning policies, support spatial growth strategies and compensation/mitigation strategies to offset any GI losses as a result of development.	££
17	Transport	Continue to work closely with OCC to support the improvement in the provision of public transport in Cherwell.	££
18	Strategic energy generation	Additional Solar PV at Community Centres.	£££
19	Strategic energy generation	Additional Solar PV at Thorpe Lane Depot.	£££

3 Table of recommended actions & cost analysis

Action number	Theme	Action	Indicative cost (£-££££)
20	CDC Estate and operations	Leisure Services to produce a low carbon design for a new pool at Bicester Leisure Centre.	££
21	Transport	Upgrade existing supply to Thorpe Lane Depot to allow charging of EV RCVs.	£££
22	Transport	Increase EV fleet to 25% by Oct '24.	££££
23	Housing	Improve our understanding of the district's housing stock so that we can prioritise funding	£
24	Strategic energy generation	Participate in a county-wide Local Area Energy Plan process.	£
25	Transport	Enabling electric charging infrastructure accessible for all residents.	£££
26	Waste and construction	Incorporate into the Local Plan (eg Policy ESD 3: Sustainable Construction) a requirement for developers to target industry standards regarding construction waste reduction, resource efficiency and circular economy principles, eg LETI 2030 target for 30% total building construction materials & elements that are reused.	£
27	Climate change adaptation	Ensure the timely production of a deliverable CDC Local Plan, to strengthen our policies to respond to climate change	£
28	Climate change adaptation	Obtain clear data on possible net zero pathways for the Cherwell District	££
29	Transport	Support the development of local cycling and walking infrastructure plans.	£
30	Industry and commerce	Support industry decarbonisation by promoting the switch from burning gas and other fuels to burning sustainable alternatives such as green hydrogen through a new local plan.	£
31	Housing	Ensure all houses in major new build developments are designed to at least meet the 2025 targets of the RIBA 2030 Climate challenge.	£

4. Appendix

Appendix – 4.1 Full list of actions: CDC estate and operations

Full action title	Short action title	Estimated carbon saving or biodiversity impact	CDC scope to influence action
Undertake a review of all buildings and deliver a plan to ensure the EPC performance of buildings is in line with our 2030 target.	Review EPCs of all buildings.	3.85	4.50
Removal of radiant gas heaters at Thorpe Lane Depot.	Remove radiant gas heaters at Thorpe Lane Depot.	2.85	4.00
Continue to monitor energy usage at Leisure Centres following the installation of ASHPs.	Monitor energy usage at Leisure Centres post ASHP installation.	3.15	5.00
Carry out investment-grade energy audits at Leisure Centres and Thorpe Lane Depot.	Investment-grade energy audits at Leisure Centres/Thorpe Lane Depot	4.20	3.85
Work with the GSE Net Zero Energy Hub and others to produce detailed designs to support heat decarbonisation in corporate buildings.	Work with the GSE Net Zero Energy Hub to support heat decarbonisation in corporate buildings	3.35	4.00
Produce a low-carbon design for the new fleet depot at Graven Hill.	Low-carbon design for the new fleet depot	3.50	4.20
Continue to include low-carbon measures when carrying out routine buildings improvements.	Low-carbon measures when carrying out routine buildings improvements	3.80	4.75
Agree approach to decarbonising the corporate estate, including a phased plan.	Agree approach to decarbonising the corporate estate	4.05	4.50
Submit an application to the Public Sector Decarbonisation Scheme.	Apply to the Public Sector Decarbonisation Scheme	3.95	4.40
Install automatic meter readers at key sites to enable better monitoring of utility bills.	Install automatic meter readers at key sites	2.85	4.20
Explore opportunities across council estate for reducing energy demand, e.g. LED lighting; air handling	Explore opportunities across council estate for reducing energy demand	3.25	4.35
Any new buildings, e.g. leisure centres, to be built to be as low carbon as financially viable.	New builds to be built to be as low carbon as financially viable	4.50	4.25
Leisure Services to produce a low carbon design for a new pool at Bicester Leisure Centre.	Produce a low carbon design for a new pool at Bicester	4.20	4.30

Appendix – 4.1 Full list of actions: CDC estate and operations

Awaiting outcome of the Environment Act regarding waste collection and potential need to expand the service.	Awaiting outcome of the Environment Act regarding waste collection	1.95	4.50
Plan and begin delivery of a programme of Carbon Literacy training for staff.	Carbon Literacy training for staff	2.65	5.00
Establish baseline data for the impact of Procurement on our Scope 3 emissions	Identify impact of Procurement on our Scope 3 emissions	3.30	3.95
Identify the suppliers/contractors with the highest emissions	Identify suppliers/contractors with the highest emissions.	2.90	4.35
Produce outline 5-year plan for reducing Scope 3 emissions from Procurement	Produce 5-year plan for reducing Scope 3 emissions from Procurement	3.30	4.40
Recruit a new staff member to support climate change activity	New staff member to support climate change activity	3.70	4.00
Produce the 2023/2024 Greenhouse Gas Report	Produce 2023/2024 Greenhouse Gas Report	4.10	4.45
Support Cherwell DC's 'transformation' process, in identifying climate actions for Service Areas.	Support Cherwell DC's 'transformation' process	4.70	4.15
Increase capacity of Cherwell DC to support its 2030 net zero target, as well as the ambition for the district to become carbon net zero.	Increase capacity of Cherwell DC to support its 2030 and net zero targets	3.25	4.00
Strengthen governance arrangements for climate change	Strengthen governance arrangements for climate change	4.05	4.15
Produce a robust evidence base showing how Cherwell can become a carbon net zero district	Evidence base showing how Cherwell can become a carbon net zero district	4.20	4.55
Climate Change actions to feature in all Business Plans	Climate Change actions to in all Business Plans	3.75	4.05
Explore new funding mechanisms to support delivery of net zero actions	new funding mechanisms to support delivery of net zero actions	2.95	3.50
Understand the threats to CDC's estate, assets and operations from climate change	Understand the threats to CDC's estate/assets/operations from climate change	2.75	4.35

Appendix – 4.2 Full list of actions: Climate Change Adaptation

Full topic title	Short topic title	Estimated carbon saving or biodiversity impact	CDC scope to influence action
Obtain clear data on possible net zero pathways for the Cherwell District	Obtain clear data on Cherwell net-zero pathways	3.85	4.10
Agree a revised target date for net zero carbon for the district.	Agree new target date for net-zero	2.50	4.40
Ensure the timely production of a deliverable CDC Local Plan, to strengthen our policies to respond to climate change	Strengthen climate change policies through the timely delivery of CDC local plan	4.05	4.15
Ensure national policy successes are reviewed and responded to and where possible incorporated into the Local Plan	Review and respond to national policy success and, where possible incorporate into local plan	2.50	4.25
Ensure a suite of other planning policies are included to support climate change mitigation and adaptation. For example: <ul style="list-style-type: none"> Net zero development Biodiversity Net Gain Green Infrastructure Low carbon and active travel. Decentralised and renewable energy systems 	Ensure a suite of planning policies are included to support climate change/adaptation.	4.35	4.20
Support partnership working, e.g. FOP, utility providers, other local authorities, to engage proactively on common policies that support climate action.	Support partnership working (E.g. Fop/Utility providers) to engage on common climate action policies.	2.50	3.75
Establish if the Local Plan can be amended to reflect the principles of One Planet Living	Establish if local plan can incorporate One Planet Living principles	1.75	4.10
Work with the Local Nature Partnership to explore the establishment of an Oxfordshire-based carbon offsetting scheme, potentially aligned to Oxford City's Area-Based In-setting approach.	With Local nature partnership explore establishing an Oxfordshire-based carbon off-setting scheme.	3.75	3.80
Co-ordinate and liaise with the energy study, looking at renewable energy for NW Bicester	Coordinate with the energy study for renewable energy at NW Bicester.	3.15	3.65

Appendix – 4.2 Full list of actions: Climate Change Adaptation

Identify areas for action for CDC	Identify areas for action for CDC	3.00	4.00
Continue with partnership working as a key approach to delivering carbon reductions across the district.	Continue partnership working to deliver carbon reductions across the district.	2.25	3.50
Support the implementation of the Oxfordshire Net Zero Route Map	Support the implementation of the Oxfordshire Net Zero Route Map	3.25	3.90
Continue to liaise and work closely with other local authorities across Oxfordshire	Continue working closely with other LAs across Oxfordshire	2.00	3.55
Explore opportunities for closer collaboration with neighbouring authorities around resident communication***	Explore opportunities for greater collaboration with surrounding LAs.	2.75	3.60
Support community groups and parish councils in best practice and advice	Support community groups and parish councils in best practice and advice	3.35	4.60
Report annually to the Executive on climate change progress	Report annually to the Executive on climate change progress	1.50	4.75
Report twice a year to the Corporate Leadership Team on climate change progress	Report twice a year to the Corporate Leadership Team on climate change progress	1.50	4.75
Report twice a year to the Overview & Scrutiny Committee on climate change progress	Report twice yearly to the Overview & Scrutiny Committee on climate change progress	1.75	4.75
All reports that go to Executive and Corporate Leadership Team to continue to include an Environmental Impact section.	All reports to executive/ corporate leadership to continue to include an Environmental impact section	3.35	4.60
Review existing arrangements for delivering climate change activity, to ensure more effective and closer working between officers across CDC	Review climate action delivery to ensure effective and close working between CDC staff.	2.38	4.65

Appendix – 4.3 Full list of actions: Housing

Full topic title	Short topic title	Estimated carbon saving or biodiversity impact	CDC scope to influence action
Promote energy efficiency opportunities, e.g. HUG/Heat Pump Ready Scheme/Cosy Homes Oxfordshire/LEAP/ECO4	Promote energy efficiency opportunities	4.60	4.00
Support neighbouring local authorities in the application for a Future Fit One Stop Shop, to support residents to take energy efficiency measures.	Support neighbouring LAs in the application for a Future Fit One Stop	2.85	3.65
Begin discussions with Registered Providers to establish what measures are being taken to increase energy efficiency of social housing.	Discuss with registered providers the energy efficiency measures they are taking	4.00	3.90
Improve our understanding of the district's housing stock so that we can prioritise funding	Improve understanding of CDC housing stock, to prioritise funding	4.10	4.35
Engagement with retrofit market to better understand capacity and capability	Engage with retrofit market to understand capacity and capability	3.65	4.10
Complete a Techno-Feasibility Study on a Banbury Heat Network	Complete a Techno-Feasibility Study on a Banbury Heat Network	4.40	4.75
Support officers working on development at NW Bicester around low-carbon	Support officers working on development at NW Bicester	3.50	4.90
Participate in Project LEON to reduce emissions from existing neighbourhoods.	Participate in Project LEON	3.40	4.15
Support Banbury Master Planning to ensure sustainability is at the heart of the process	Support Banbury Master Planning to ensure sustainability is at the heart of the process	4.50	4.40
Ensure all houses in major new build developments are designed to at least meet the 2025 targets of the RIBA 2030 Climate challenge.	Ensure major development homes meet RIBA 2025 targets	4.00	4.00

Appendix – 4.4 Full list of actions: Industry and commerce

Full topic title	Short topic title	Estimated carbon saving or biodiversity impact	CDC scope to influence action
Deliver Tame the Carbon Monster training for local businesses to be held autumn 2023	Deliver Tame the Carbon Monster training	3.75	3.75
Green Skills – undertake market research/gathering evidence to understand what support we can provide leading towards how we use the Shared Prosperity Fund 2024/25	Undertake market research/gathering evidence to understand how we use the Shared Prosperity Fund 2024/25	3.00	4.25
Green Construction Skills – support colleagues in Planning to include the delivery of apprenticeships/training opportunities through planning conditions.	support colleagues in Planning to include the delivery of apprenticeships/training opportunities	4.00	4.60
Business Survey – covering needs and issues facing local companies, including environmental matters	Business Survey – covering needs and issues facing local companies	2.40	4.35
Cherwell-focussed business forum/network – draw resources into Cherwell to support businesses to reduce emissions.	Cherwell-focussed business forum/network	3.00	4.00
Support business networks in showcasing business best practice and innovation in the low carbon sector	Support business networks in showcasing business best practice and innovation in the low carbon sector	2.75	4.00
Support industry decarbonisation by promoting the switch from burning gas and other fuels to burning sustainable alternatives such as green hydrogen through a new local plan.	Promote the use of sustainable alternative to fossil fuels in industry.	4.00	4.00

Appendix – 4.5 Full list of actions: Land and nature

Full topic title	Short topic title	Estimated carbon saving or biodiversity impact	CDC scope to influence action
Consider next contract (Landscape) to include use of electric vehicles and machinery.	Landscape tools to be electric from next contract.	2.40	3.90
Decarbonisation and Natural Environment – plan for implementation of this element of the Shared Prosperity Fund ready for Spring 2024.	Natural capital and decarbonisation: Shared prosperity fund set up.	1.75	3.80
Produce a management plan for Longford Park to reduce regular mowing activities, improve biodiversity and engage with the community	Management plan to reduce regular mowing at Langford park	2.75	4.25
Enhancement of Banbury Country Park, Longford Park, Burnehill Woodland and Graven Hill to support biodiversity and carbon sequestration	Enhance specific areas of green space to support biodiversity	3.40	4.00
Support key biodiversity partners and local communities to protect, manage and enhance habitats which have carbon removal and storage functions.	Support partners to protect/manage/enhance habitat with carbon removal functions	3.75	3.75
Support the emerging Local Plan to introduce a policy of 20% Biodiversity Net Gain, which would double funds available for nature recovery	Introduce policy of 20% BNG in the local plan	4.00	4.75
Aim to support and promote initiatives to encourage involvement in the natural environment and to improve public understanding of, and connection with, nature	Support/promote initiatives to encourage involvement with and connection to the natural environment	2.25	3.50
Continue to monitor and support improvements in air quality, pollution, litter and fly-tipping	Monitor/support improvements in air quality, litter, pollution and fly-tipping	2.00	3.75

Appendix – 4.5 Full list of actions: Land and nature

Supporting the county-wide Local Nature Recovery Strategy process which is being led by Oxfordshire County Council with the support of the Local Nature Partnership.	Support Local nature recovery strategy process.	2.00	4.00
Support emergence and facilitation of farmer clusters, boosting their key role in delivery of landscape-scale natural capital enhancement.	Support emergence/facilitation of farmer clusters	2.75	3.65
Explore with neighbouring planning authorities, the extent to which the Local Nature Recovery Strategy can be incorporated into the Local Plan and related decision-making processes.	With neighbouring LAs explore how/if the Local Nature Recovery Strategy can be incorporated into the local plan.	2.30	3.25
Enable Planning and Communities officers to integrate elements of Natural England's Green Infrastructure Framework into the new Local Plan and other delivery plans.	Enable planning and communities officers to integrate part of Natural England green infrastructure framework into new local plan	2.65	4.30
Increase the amount of natural capital in Cherwell through additional habitat creation, especially in urban areas.	Increase Cherwell natural capital through additional habitat creation	3.25	3.80
Aim to increase the biodiversity value of our Local Wildlife Sites, by increasing frequency of monitoring and provision of improved management guidance.	Increase biodiversity value of Cherwell's Local Wildlife Sites.	3.00	4.15
Work with partners to ensure availability of sufficient biodiversity net gain offset sites in Cherwell to ensure that the maximum biodiversity and carbon capture value of this policy is retained within the district. That this is targeted at priority nature recovery areas as defined by the draft Nature Recovery Network and the forthcoming Local Nature Recovery Strategy.	Ensure Cherwell has sufficient Biodiversity net gain sites	4.10	2.50

Appendix – 4.5 Full list of actions: Land and nature

Support key biodiversity partners and local communities to protect, manage and enhance habitats which provide other regulating ecosystem services such as urban cooling, flood mitigation, water purification, drought mitigation, air quality enhancement.	Support biodiversity partners/local communities to protect/manage/enhance habitats that provide ecosystem services.	3.15	3.25
Support Bernwood Otmoor Ray, as a key landscape recovery project in the District	Support Burntwood Otmoor Ray landscape recover project	3.50	2.65
Support the work of the Local Nature Partnership's Natural Capital group	Support Local Nature Partnership Natural Capital Group	2.25	3.40
Develop a comprehensive tree/forest strategy in order to increase tree planting rates within the district and ensure long-term maintenance/stewardship of forests/woodlands (eg could include plan to grow low maintenance trees on road verges and in forest gardens; volunteer programmes for tree planting; opportunities for carbon offsetting schemes)	Develop a tree/forest strategy for tree planting and woodland management	4.50	4.25
Commission a blue/green infrastructure survey of the district to map existing and potential natural capacity for carbon sequestration and storage. Use this to inform local planning policies, support spatial growth strategies and compensation/mitigation strategies to offset any GI losses as a result of development.	Blue/green survey to map district's capacity for carbon sequestration/storage	4.25	4.25

Appendix – 4.6 Full list of actions: Strategic energy generation

Full topic title	Short topic title	Estimated carbon saving or biodiversity impact	CDC scope to influence action
Additional Solar PV at Community Centres.	Additional Solar PV at Community Centres.	4.00	4.50
Install solar PV car ports at Kidlington and Spiceball Leisure Centres.	PV car ports at Kidlington and Spiceball Leisure Centres.	4.50	4.50
Additional Solar PV at Thorpe Lane Depot.	Additional Solar PV at Thorpe Lane Depot.	4.00	4.50
Maximise income from all solar arrays on council buildings, e.g. consider further battery storage.	Maximise income from CDC all solar arrays	3.50	3.75
Carry out audit of buildings/car parks, to identify opportunities for additional energy generation.	Audit buildings/carparks for energy generation potential.	3.25	4.40
Participate in a county-wide Local Area Energy Plan process.	county-wide Local Area Energy Plan	4.05	4.25
Oxfordshire Energy Strategy: 5x Solar power increase.	Oxfordshire Energy Strategy: 5x Solar power increase.	3.75	2.90

Appendix – 4.7 Full list of actions: Transport

Full topic title	Short topic title	Estimated carbon saving or biodiversity impact	CDC scope to influence action
Increase EV fleet to 25% by Oct '24.	Increase EV fleet to 25% by Oct '24.	4.00	4.50
Continue to optimise routes for RCVs.	Optimise routes for RCVs.	3.50	4.15
Expand salary sacrifice scheme to include EVs.	CDC Salary sacrifice for Eves	1.90	2.70
Consider the viability of e-bikes and e-cargo bikes for business journeys; explore options to allow staff to use council EV pool cars for business journeys.	e-bikes/E-cargo bikes/Eves share for CDC staff	2.80	4.50
Produce an evidence base for commuter miles in order to be able to address business mileage.	Commuter miles evidence base	2.60	4.50
Work with OCC to implement LEVI funding to expand EV infrastructure in Cherwell	Work with OCC to expand EV infrastructure	4.55	4.75
Support the development of local cycling and walking infrastructure plans	Develop active travel infrastructure plan	4.10	4.00
Continue to work closely with OCC to support the improvement in the provision of public transport in Cherwell	Work with OCC on public transport provision	4.40	4.10
Increase the number of people walking and cycling in conjunction with the healthy place shaping principles	Increase active travel participation using healthy place shaping principles	4.10	3.60
Prioritise digital infrastructure and co-working facilities over road building: connectivity, enabled by full fibre broadband across Oxfordshire will replace the need for many journeys	Prioritise digital infrastructure and co-working facilities over road building	4.60	4.00

Appendix – 4.7 Full list of actions: Transport

Increasingly deprioritise journeys by single occupancy private car	De prioritise single occupance car journeys	3.95	2.75
Enabling electric charging infrastructure accessible for all residents	Enable access to electric charging for all CDC residents	4.75	3.50
Upgrade existing supply to Thorpe Lane Depot to allow charging of EV RCVs.	Upgrade Thorpe Lane to allow for RCV EV charging	4.00	4.50

Appendix – 4.8 Full list of actions: Waste and construction

Full topic title	Short topic title	Estimated carbon saving or biodiversity impact	CDC scope to influence action
Promote better use of recycling facilities in corporate buildings.	Promote better use of recycling facilities in corporate buildings.	1.80	3.00
Increase rates of domestic recycling (currently c.55%) in line with the Oxfordshire Waste Strategy, which is aiming for 70%	Increase rates of domestic recycling	2.05	2.50
Support the work of the Cherwell Food Action Waste Group	Support the work of the Cherwell Food Action Waste Group	2.35	3.75
Work with partners and others to minimise waste arisings from domestic and commercial sources	Work with partners and others to minimise waste arisings from domestic and commercial sources	2.00	3.25
CDC CA Projects: Work in partnership to deliver the Joint Municipal Waste Management Strategy	Deliver Joint Municipal Waste Management Strategy	2.50	2.90
Waste and consumption: Work towards assessing whole system carbon impacts in our waste strategy planning and seek to influence national policy	Work towards assessing whole system carbon impacts in our waste strategy planning	2.60	3.50
Incorporate into the Local Plan (eg Policy ESD 3: Sustainable Construction) a requirement for developers to target industry standards regarding construction waste reduction, resource efficiency and circular economy principles, eg LETI 2030 target for 30% total building construction materials & elements that are reused.	Incorporate construction waste reduction and circular economy targets into the Local Plan	4.00	4.25

Appendix – 4.9 Full list of additional actions provided by Bioregional

Full topic title	Short topic title	Estimated carbon saving or biodiversity impact	CDC scope to influence action
<p>Incorporate into the Local Plan (eg Policy ESD 3: Sustainable Construction) a requirement for developers to target industry standards regarding construction waste reduction, resource efficiency and circular economy principles, eg LETI 2030 target for 30% total building construction materials & elements that are reused.</p>	<p>Incorporate construction waste reduction and circular economy targets into the Local Plan</p>	<p>4.00</p>	<p>4.25</p>
<p>Ensure all houses in major new build developments are designed to at least meet the 2025 targets of the RIBA 2030 Climate challenge.</p>	<p>Ensure major development homes meet RIBA 2025 targets</p>	<p>4.00</p>	<p>4.00</p>
<p>Support industry decarbonisation by promoting the switch from burning gas and other fuels to burning sustainable alternatives such as green hydrogen through a new local plan.</p>	<p>Promote the use of sustainable alternative to fossil fuels in industry.</p>	<p>4.00</p>	<p>4.00</p>
<p>Develop a comprehensive tree/forest strategy in order to increase tree planting rates within the district and ensure long-term maintenance/stewardship of forests/woodlands (eg could include plan to grow low maintenance trees on road verges and in forest gardens; volunteer programmes for tree planting; opportunities for carbon offsetting schemes)</p>	<p>Develop a tree/forest strategy for tree planting and woodland management</p>	<p>4.50</p>	<p>4.25</p>



Appendix – 4.9 Full list of additional actions provided by bioregional.

<p>Commission a blue/green infrastructure survey of the district to map existing and potential natural capacity for carbon sequestration and storage. Use this to inform local planning policies, support spatial growth strategies and compensation/mitigation strategies to offset any GI losses as a result of development.</p>	<p>Blue/green survey to map district's capacity for carbon sequestration/storage</p>	<p>4.25</p>	<p>4.25</p>
<p>Incorporate into the Local Plan (eg Policy ESD 3: Sustainable Construction) a requirement for developers to target industry standards regarding construction waste reduction, resource efficiency and circular economy principles, eg LETI 2030 target for 30% total building construction materials & elements that are reused.</p>	<p>Incorporate construction waste reduction and circular economy targets into the Local Plan</p>	<p>4.00</p>	<p>4.25</p>



Bioregional

Thomas Russell, Analyst
thomas.russell@bioregional.com

Nina Wallace, Senior analyst
nina.wallace@bioregional.com

Reviewed by: Lewis Knight, Head of Sustainable Places
lewis.knight@bioregional.com
